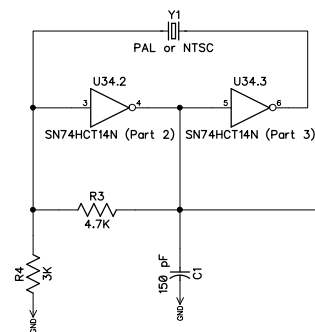


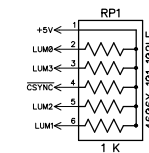
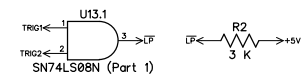
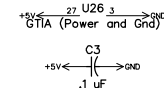
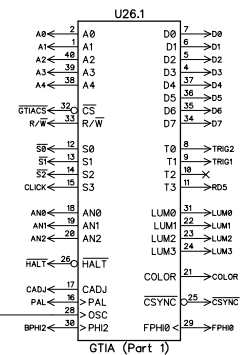
System clock Generation

NTSC Crystal = 3.579545 MHz

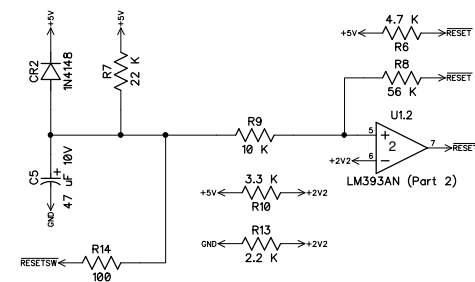
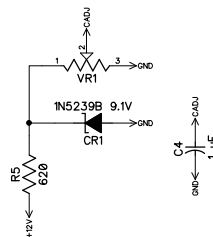
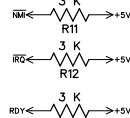
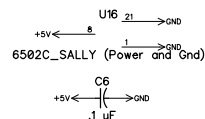
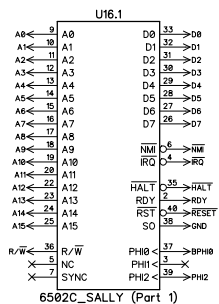
Use PAL Crystal with PALburst by Mytek
and appropriate PAL Antic and GTIA
PAL Crystal = 3.546894 MHz



Jumper for Pal

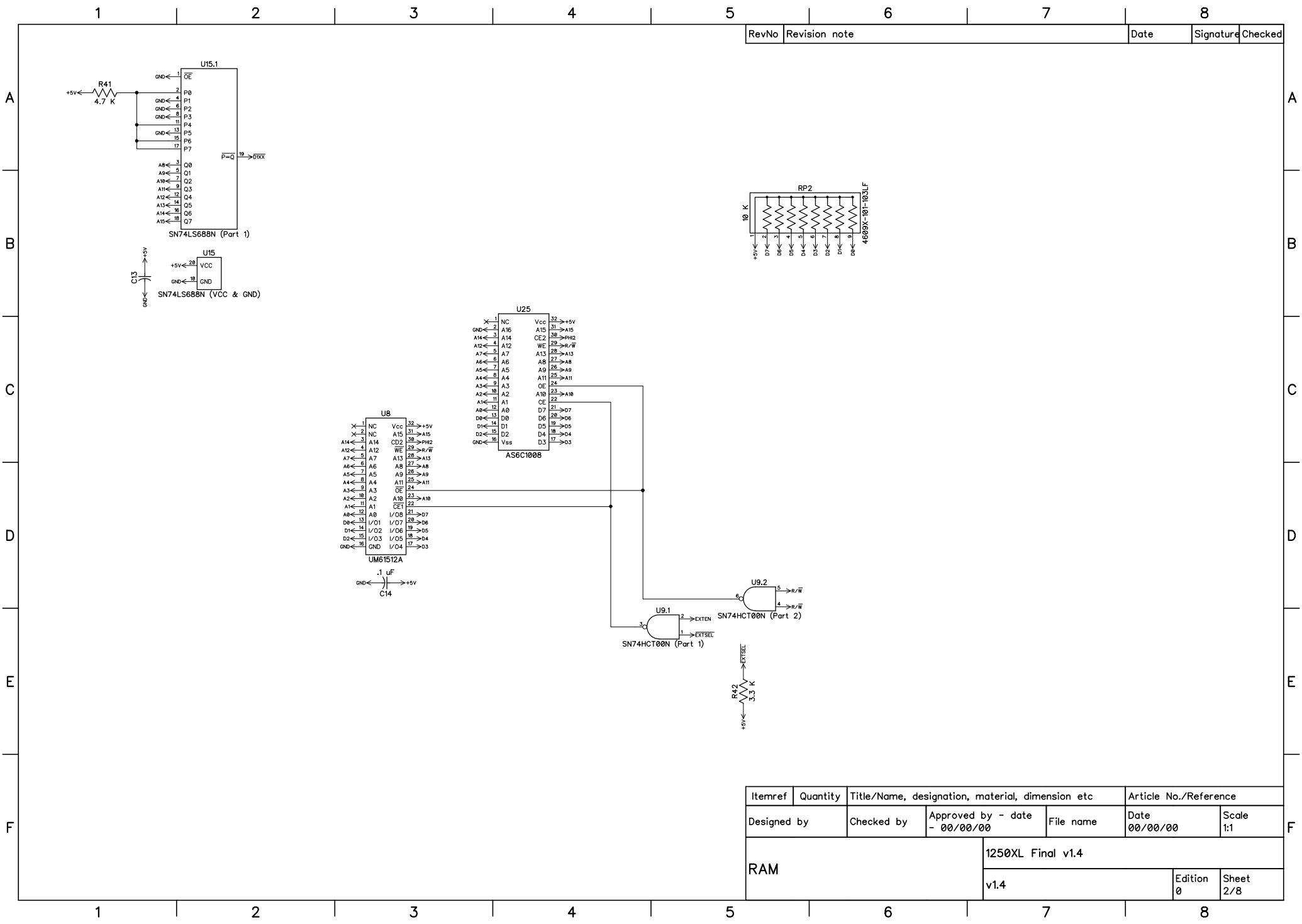


O2 = PHI2
B02 = BPHI2
Clock is buffered
through U24

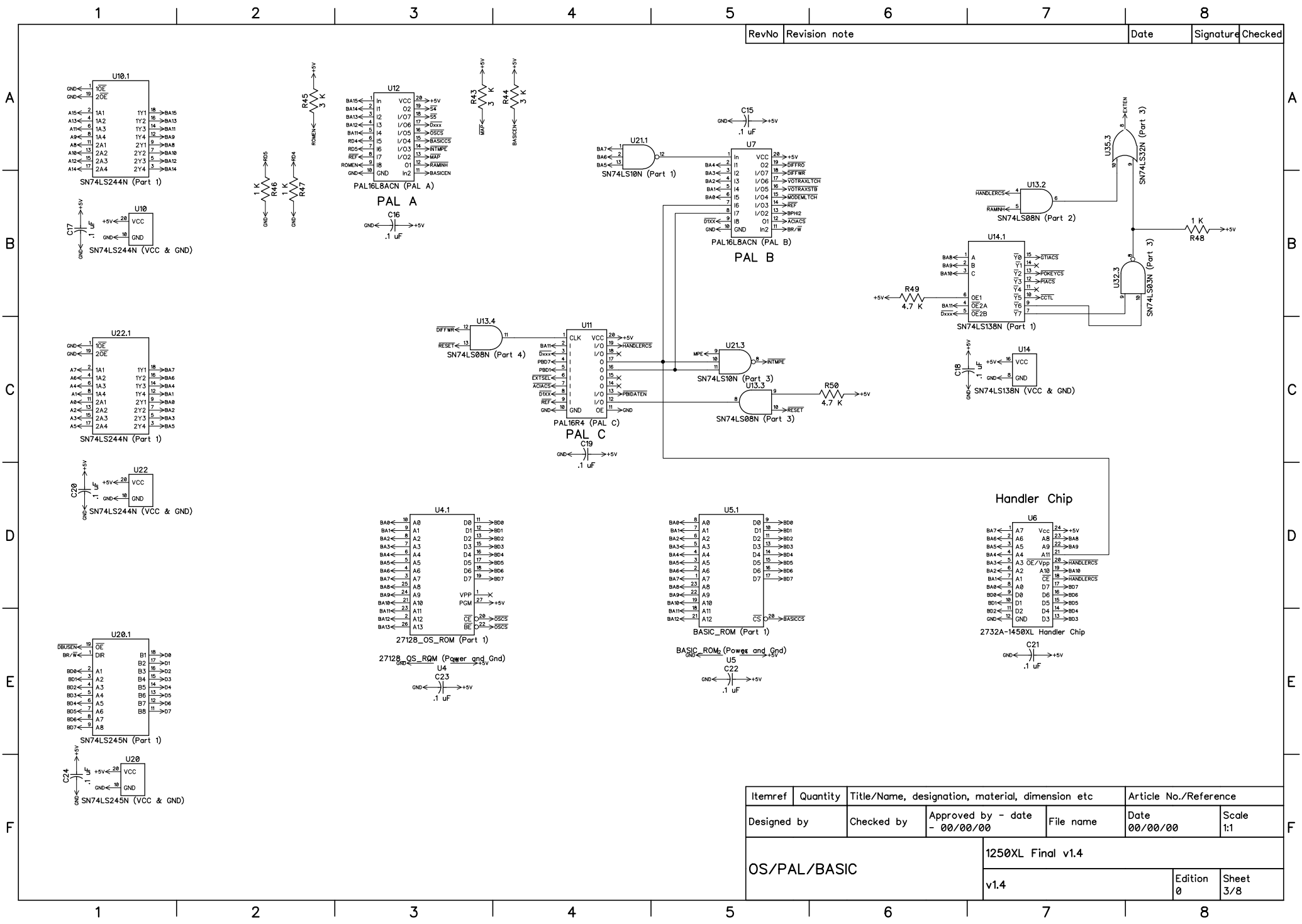


Reset Circuit

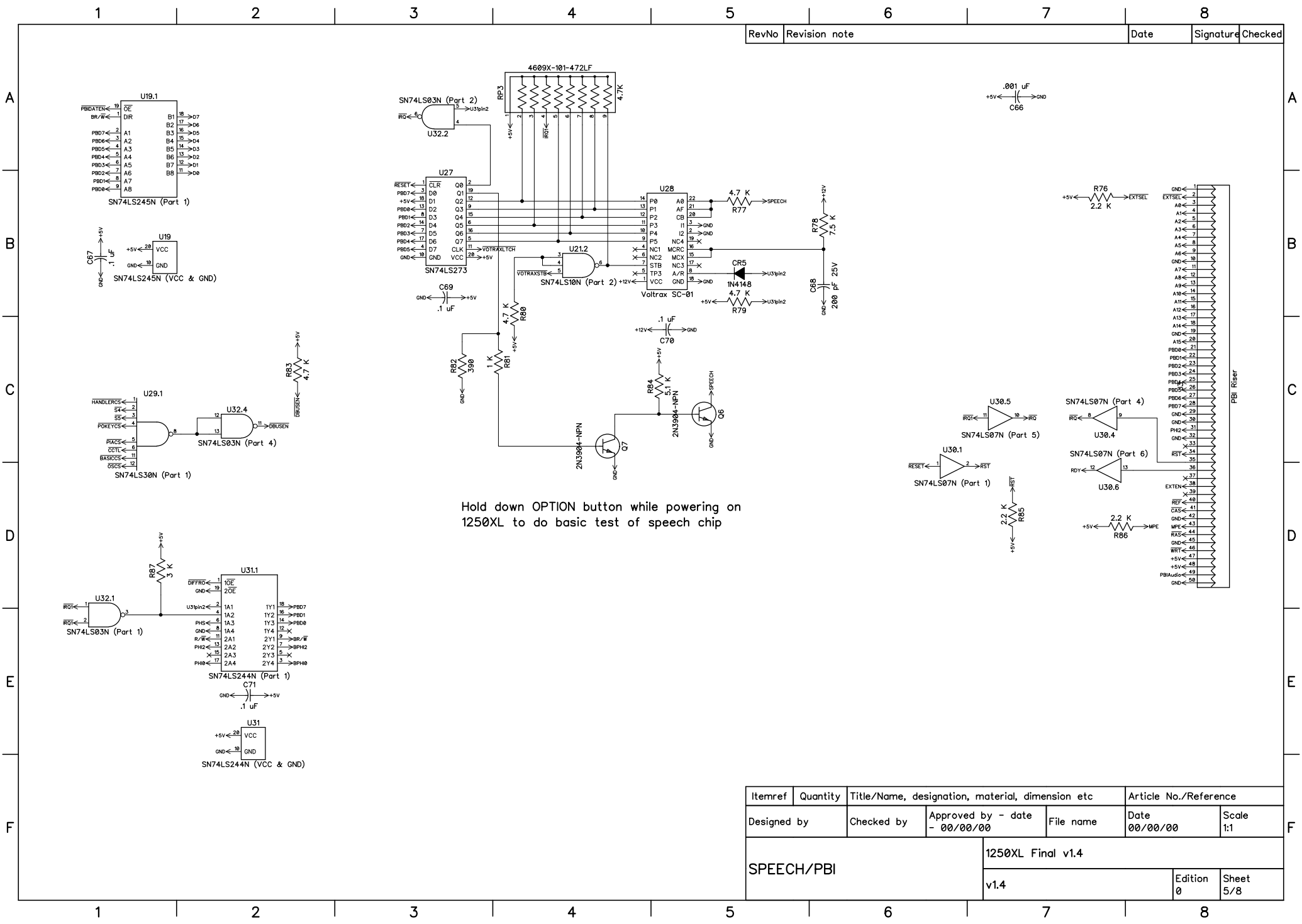
Itemref	Quantity	Title/Name, designation, material, dimension etc			Article No./Reference	
Designed by	Checked by	Approved by - date	File name	Date	00/00/00	Scale 1:1
CPU/ANTIC/GTIA			1250XL Final v1.4			
v1.4			Edition 0		Sheet 1/8	



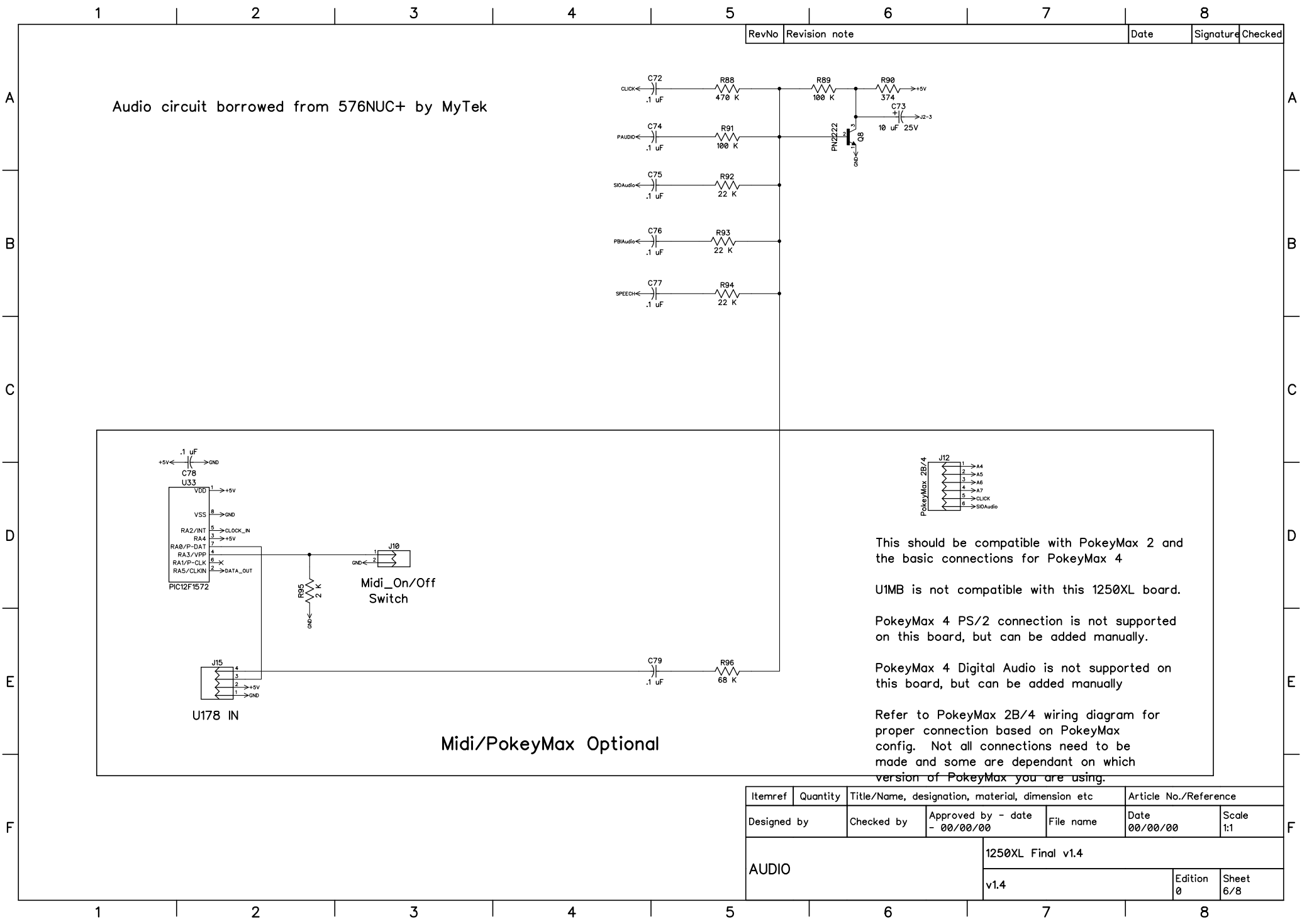
Itemref	Quantity	Title/Name, designation, material, dimension etc			Article No./Reference	
Designed by	Checked by	Approved by - date		File name	Date	Scale
RAM		1250XL Final v1.4			00/00/00	1:1
		v1.4			Edition	Sheet
					0	2/8

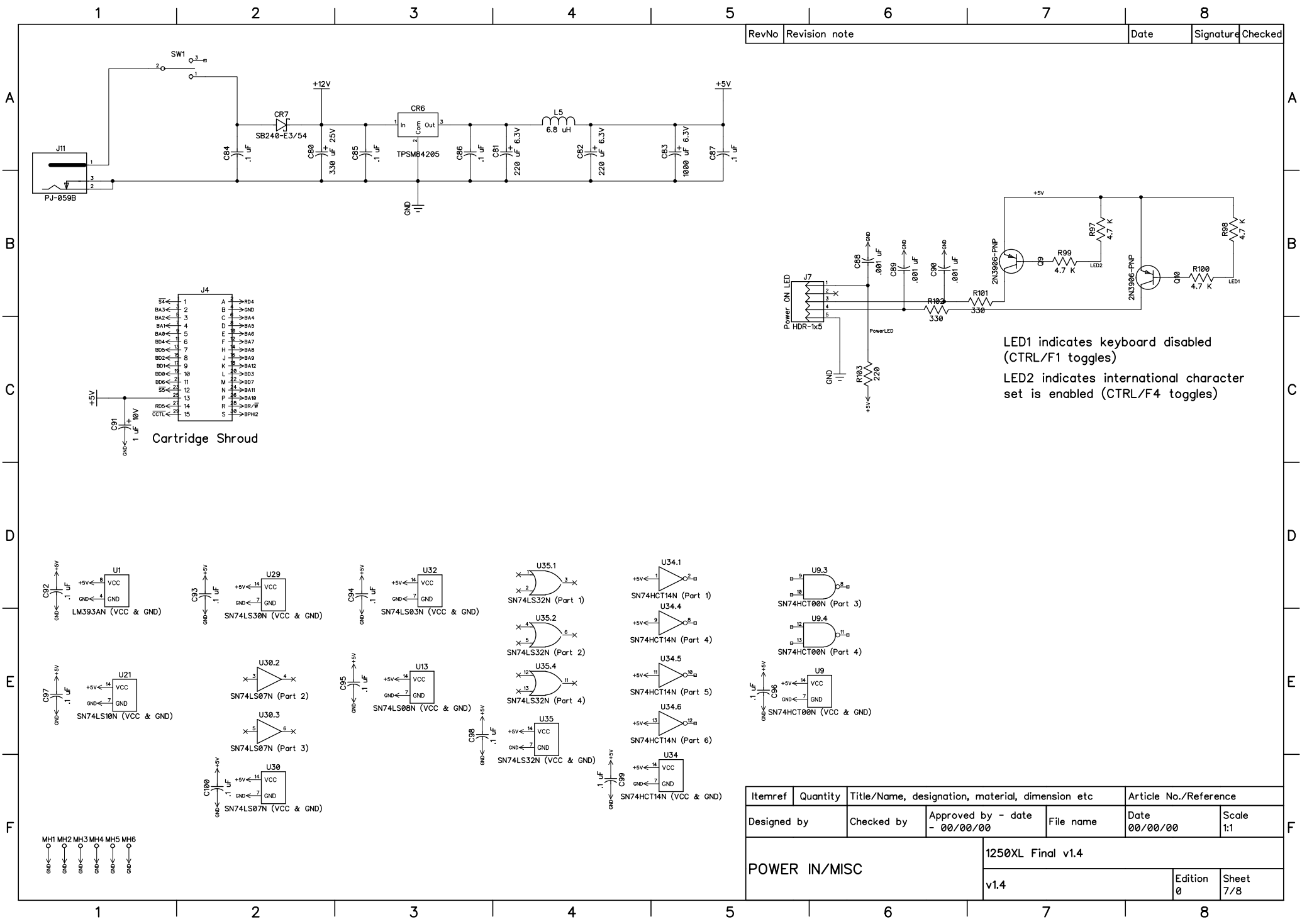


Itemref	Quantity	Title/Name, designation, material, dimension etc			Article No./Reference	
Designed by		Checked by	Approved by - date	File name	Date	Scale
OS/PAL/BASIC			- 00/00/00	1250XL Final v1.4	00/00/00	1:1
			v1.4			Edition 0
						Sheet 3/8



Itemref	Quantity	Title/Name, designation, material, dimension etc			Article No./Reference	
Designed by		Checked by	Approved by - date - 00/00/00	File name	Date 00/00/00	Scale 1:1
SPEECH/PBI			1250XL Final v1.4			
			v1.4		Edition 0	Sheet 5/8





RevNo	Revision note	Date	Signature	Checked
POWER IN/MISC		1250XL Final v1.4		
		v1.4		
		Edition 0		Sheet 7/8

LED1 indicates keyboard disabled (CTRL/F1 toggles)
LED2 indicates international character set is enabled (CTRL/F4 toggles)