

A

B

C

D

E

F

A

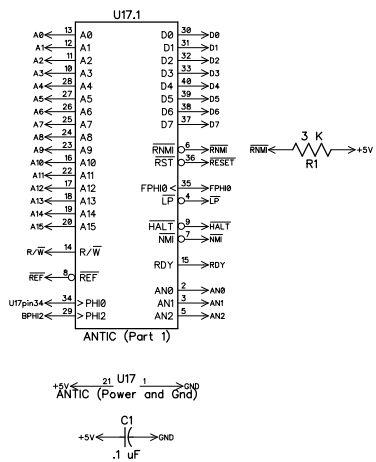
B

C

D

E

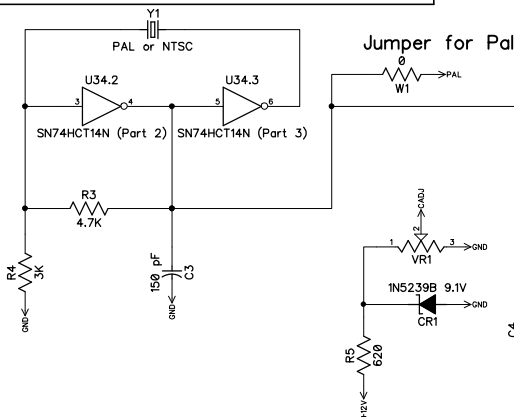
F



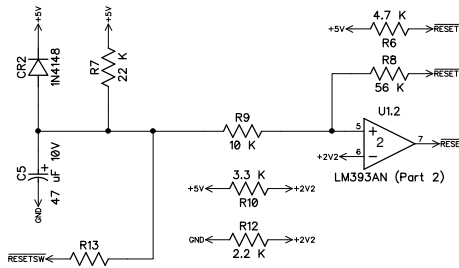
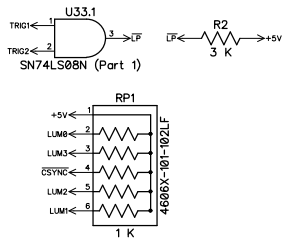
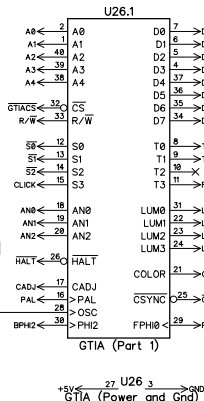
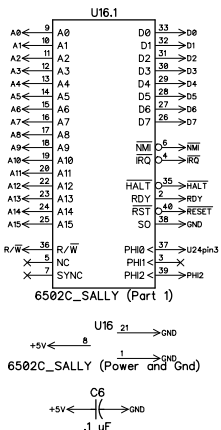
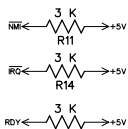
System clock Generation

NTSC Crystal = 3.579545 MHz

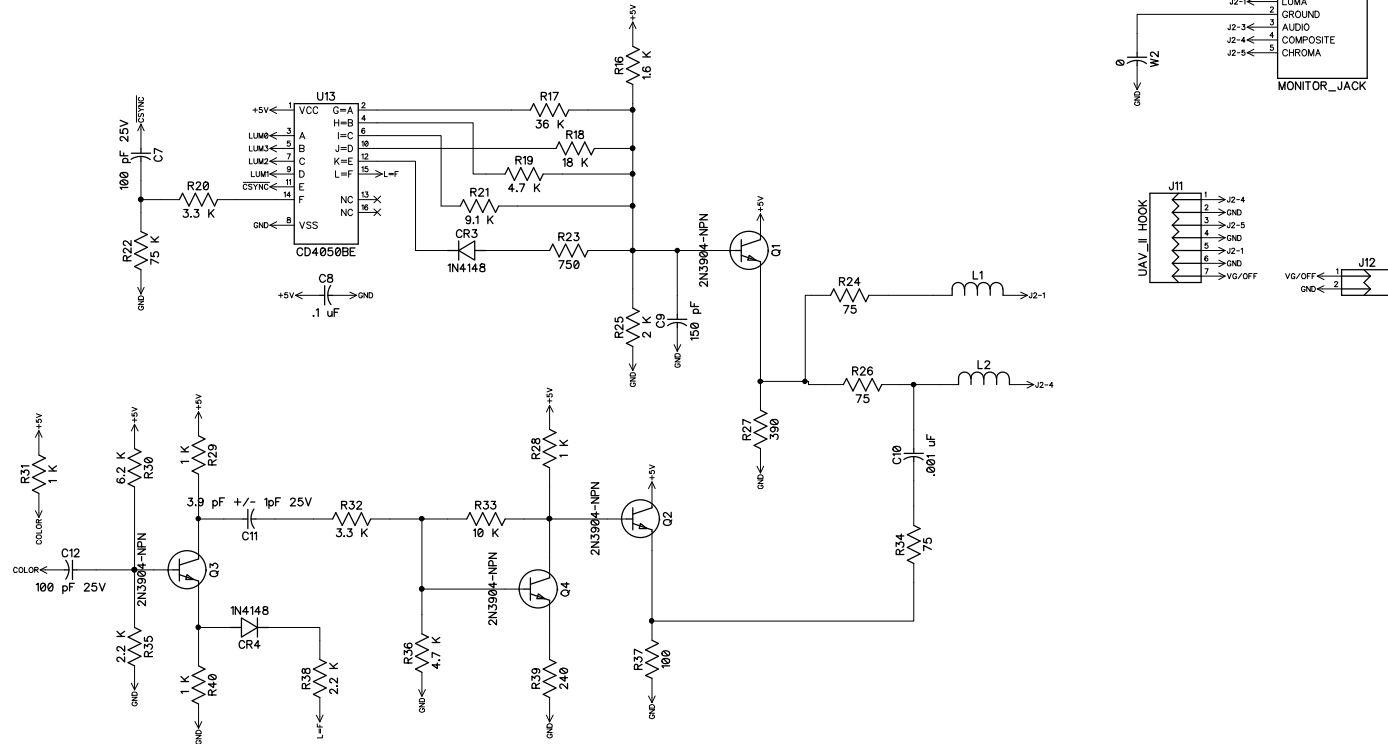
Use PAL Crystal with PALburst by Mytek
 and appropriate PAL Antic and GTIA
 PAL Crystal = 3.546894 MHz



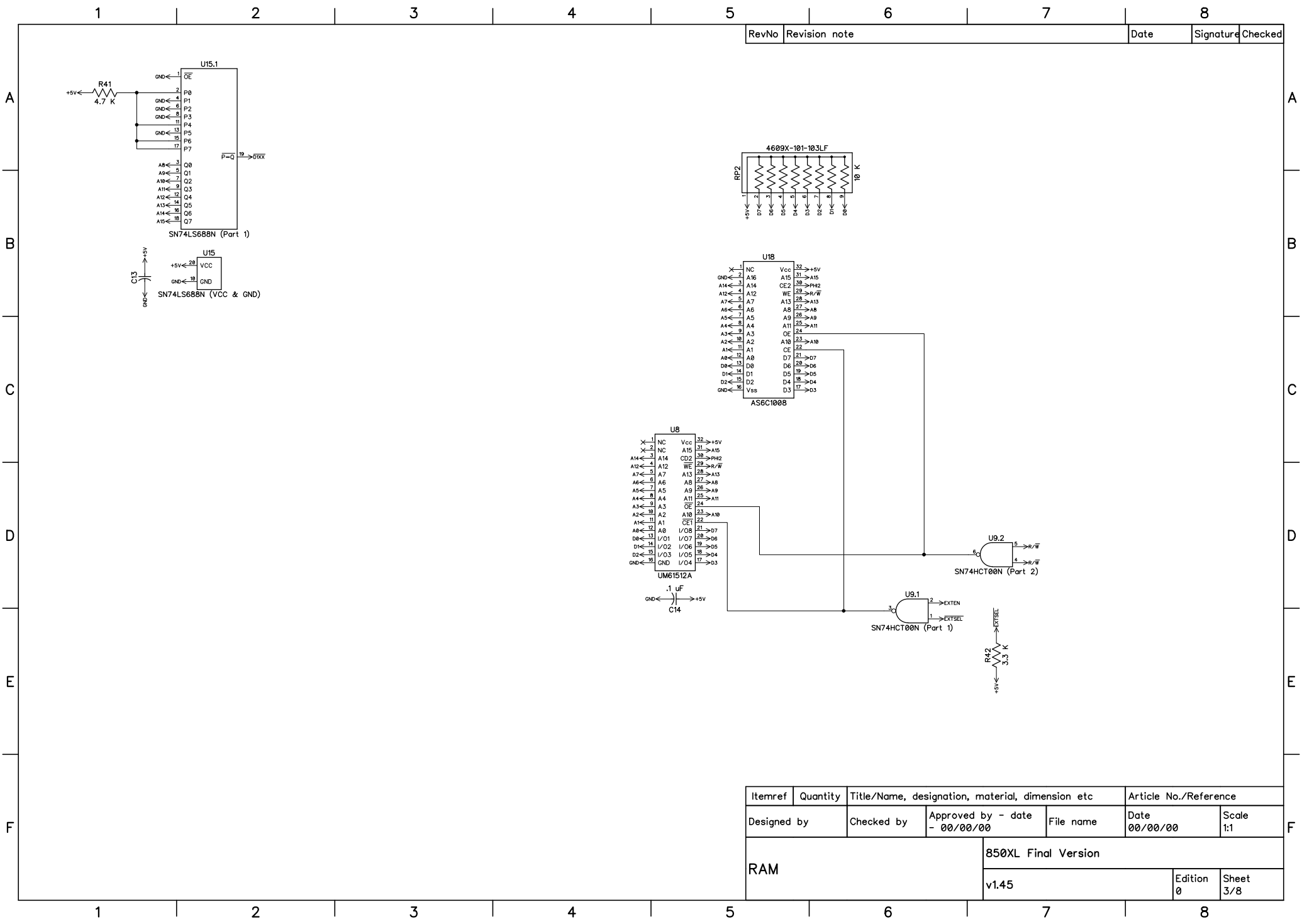
O2 = PH12
 B02 = BPH12
 Clock is buffered
 through U24



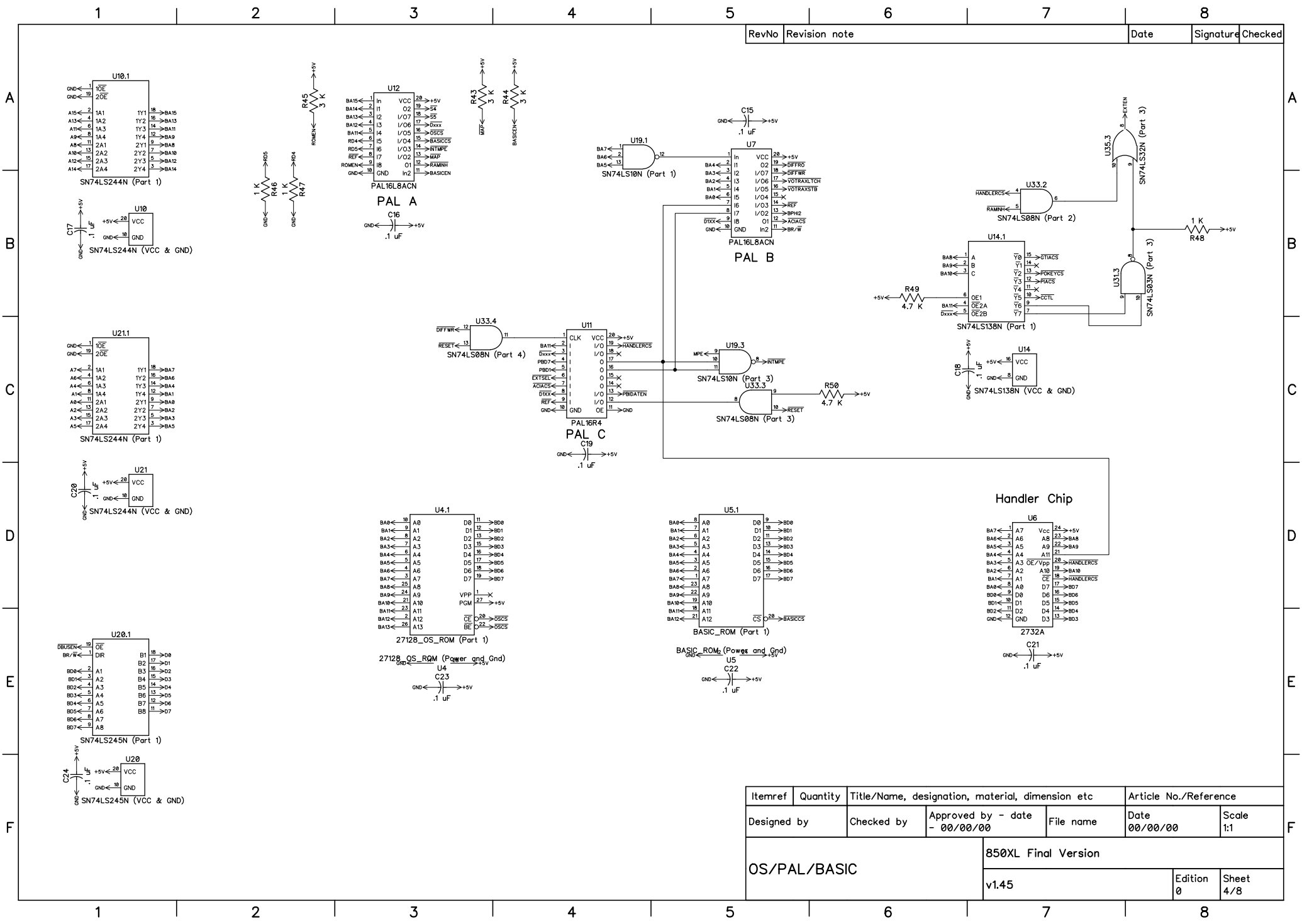
Itemref	Quantity	Title/Name, designation, material, dimension etc			Article No./Reference	
Designed by	Checked by	Approved by - date	File name	Date	00/00/00	Scale
				850XL Final Version		
CPU/ANTIC/GTIA		v1.45		Edition		Sheet
				0		1/8



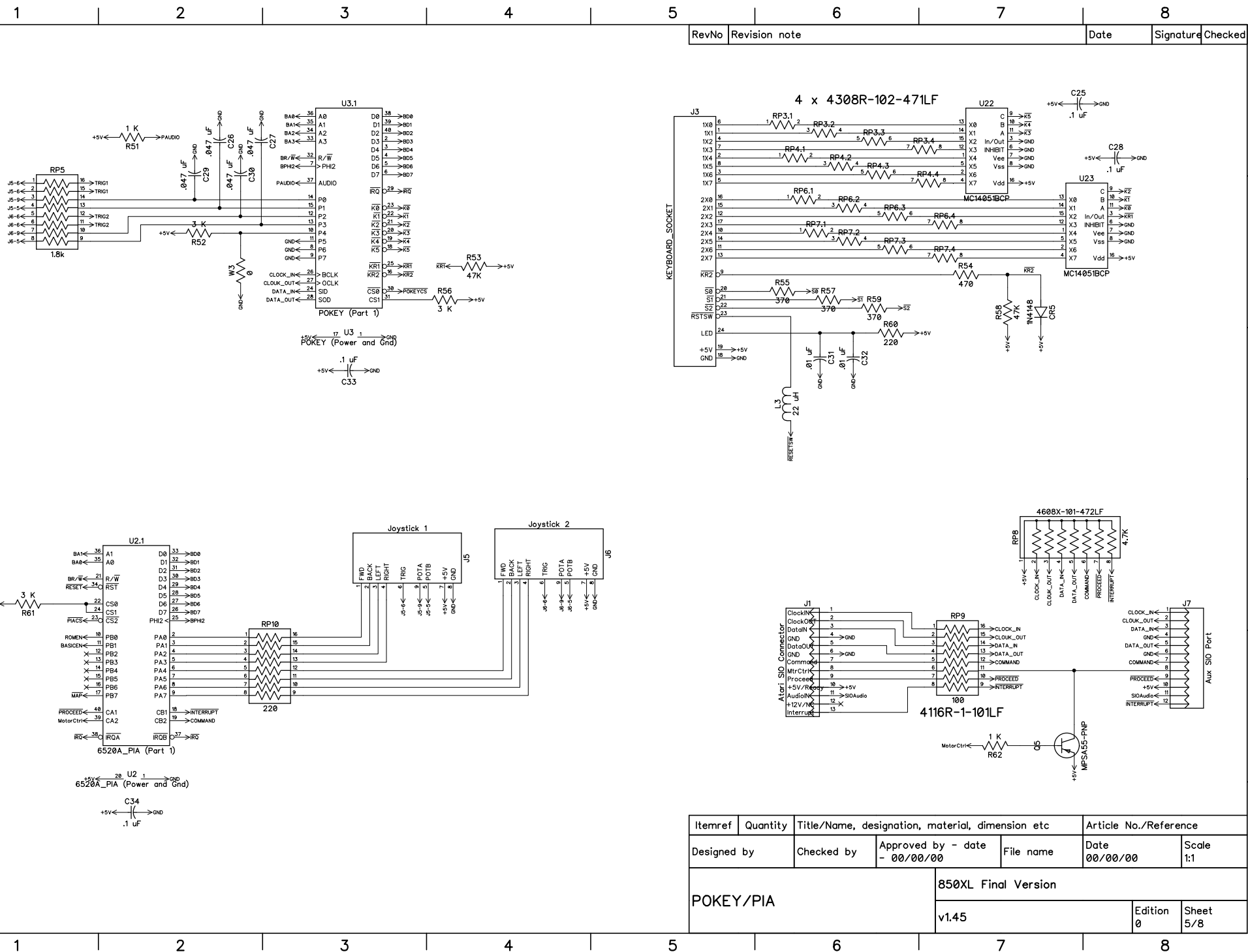
Itemref	Quantity	Title/Name, designation, material, dimension etc			Article No./Reference	
Designed by	Checked by	Approved by - date	File name	Date	00/00/00	Scale 1:1
Video			850XL Final Version			
			v1.45		Edition 0	Sheet 2/8



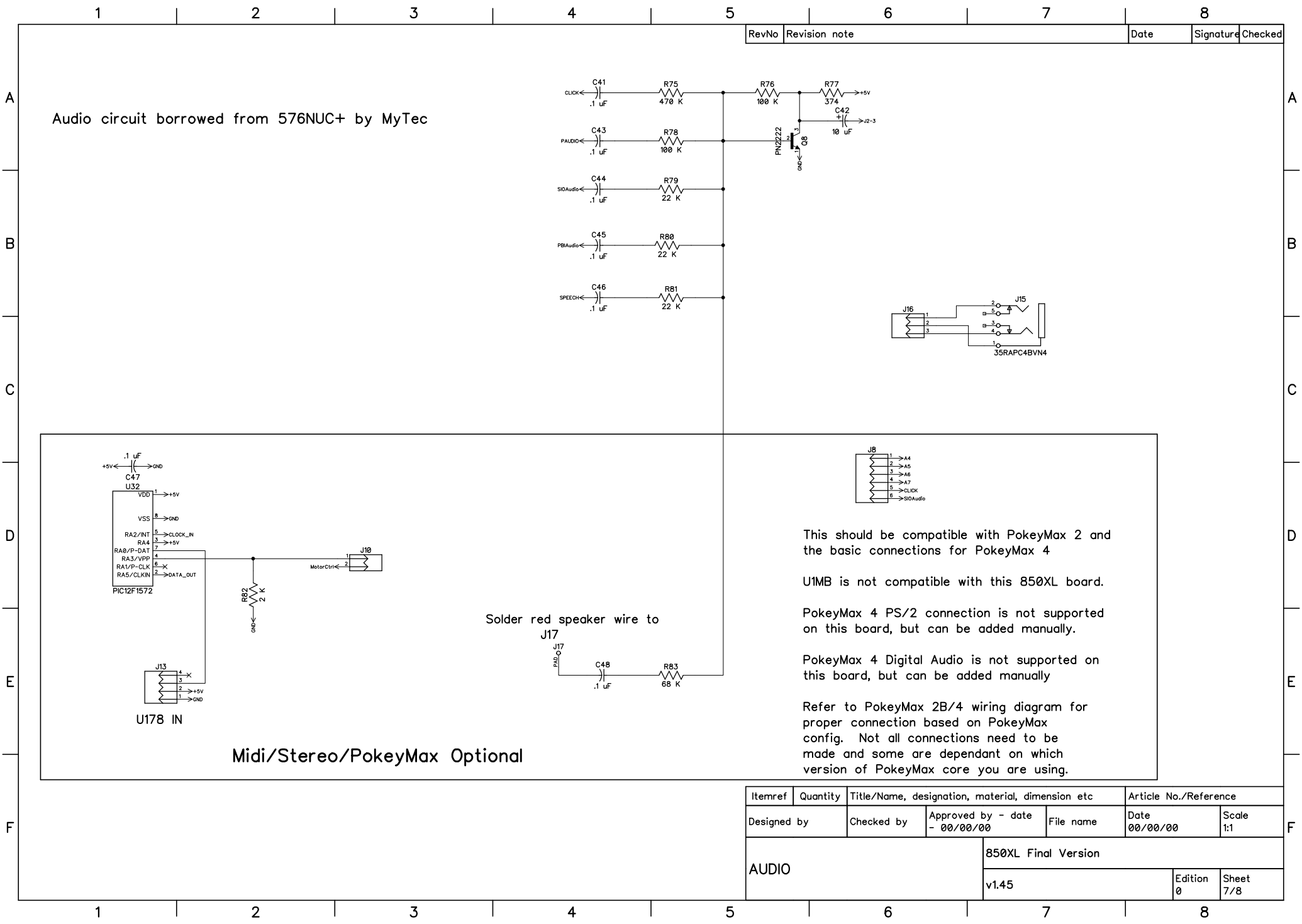
Itemref	Quantity	Title/Name, designation, material, dimension etc			Article No./Reference	
Designed by		Checked by	Approved by - date	File name	Date	Scale
			00/00/00		00/00/00	1:1
RAM				850XL Final Version		
				v1.45	Edition	Sheet
					0	3/8

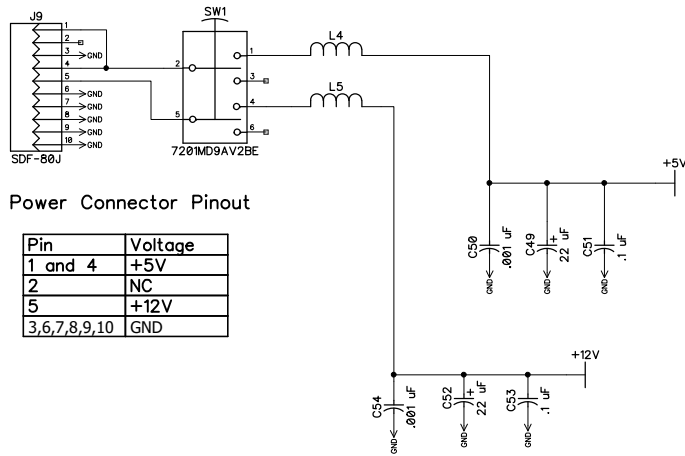


Itemref	Quantity	Title/Name, designation, material, dimension etc			Article No./Reference	
Designed by	Checked by	Approved by - date	File name	Date	00/00/00	Scale
				850XL Final Version		
				v1.45		
				Edition 0		
				Sheet 4/8		



SPEECH/PBI



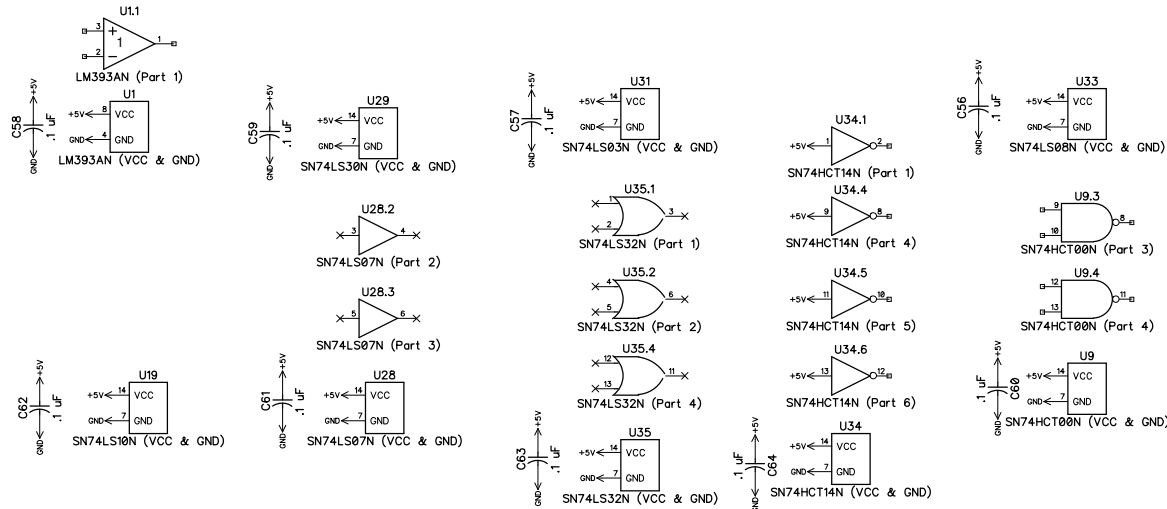
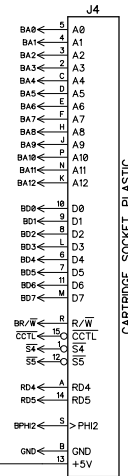


0 ohm resistors(jumpers)

W1 - Not normally used unless you are trying to use PAL chips. (Best to use PALBurst board instead.)

W2 - Use for connection to GND for Monitor out

W3 - Not normally used



Itemref	Quantity	Title/Name, designation, material, dimension etc			Article No./Reference	
Designed by	Checked by	Approved by - date	File name	Date	00/00/00	Scale 1:1
POWER IN/MISC			850XL Final Version			
v1.45			Edition 0		Sheet 8/8	